



**PROTEA TURF EQUIPMENT**  
Manufacturers of Industrial Lawnmowers, Scarifiers & Sodcutters

Reg. No. CK 1989/023716/23  
Vat Reg. No. 4830119907

## PROTEA SVG760



### OPERATING INSTRUCTIONS AND SPARE PARTS MANUAL

P.O. Box 1673  
Bedfordview  
2008

[www.proteamachines.com](http://www.proteamachines.com)

32 Shaft Rd  
Knights, Germiston  
Tel: +2711 828 9935



## **PROTEA TURF EQUIPMENT**

*Manufacturers of Industrial Lawnmowers, Scarifiers & Sodcutters*

Reg. No. CK 1989/023716/23

Vat Reg. No. 4830119907

32 Shaft Rd, Knights, Germiston

P.O. Box 1673, Bedfordview, 2008

Tel: 011 828 9935

**[www.proteamachines.com](http://www.proteamachines.com)**

---

### **CONTACT DETAILS:**

#### **Contact Numbers**

Tel: +2711 828 9935

Mobile: +2782 458 7257

#### **Postal Address**

P.O. Box 1673  
Bedfordview  
2008  
Gauteng  
South Africa

#### **Physical Address**

32 Shaft Road  
Knights  
Germiston  
Gauteng  
South Africa

Email: [spares@proturf.co.za](mailto:spares@proturf.co.za)

Email: [sales@proturf.co.za](mailto:sales@proturf.co.za)

Email: [sean@proturf.co.za](mailto:sean@proturf.co.za)

For further information on any Protea products, please visit our website [www.proteamachines.com](http://www.proteamachines.com)

## LAWNMOWER SAFETY PRECAUTIONS

1. Know your controls. Read the owner's manual carefully. Learn how to stop engine quickly in the event of an emergency.
2. Ensure the lawn is clear of sticks, stones, wire and debris. They could be thrown by the blade.
3. Stop the engine and disconnect the spark plug wire before checking or working on the mower.
4. Before use, always visually inspect to see that the blade bolts and cutter assembly are not worn or damaged. Replace worn or damaged blades and bolts in sets to preserve balance.  
**Damaged blades and worn bolts are a major hazard.**
5. Check all nuts, bolts and screws often. Always ensure the mower is in a safe operating condition. Use only replacement parts made and guaranteed by the original manufacturer of your mower.
6. Add fuel **BEFORE** starting engine. Avoid spilling gasoline and do not fill the tank while the engine is running or while you are smoking.
7. Do not mow whilst people, especially children or pets, are in the mowing area.
8. Never use the mower unless the grass catcher, or guards provided by the manufacturer, are in position.
9. Do not mow barefoot or in open sandals. Wear long trousers and heavy shoes.
10. Disengage all blade and drive clutches before starting.
11. Start the engine carefully with feet well away from the blades.
12. Do not operate the engine in a confined space where exhaust fumes (carbon monoxide) can collect.
13. Stop the engine whenever you leave the mower unattended, even for a moment.
14. Stop the engine before pushing the mower across gravel drives, walks or roads.
15. Do not allow children or people unfamiliar with these instructions operate the mower.
16. On slopes or wet grass, be extra careful of your footing.
17. Never cut grass by pulling the mower towards you.
18. Never use an electrically powered mower in the rain or when the grass is wet.
19. Be extremely careful when using a ride on mower on slopes.
20. Never leave wind-up starters in a wound condition.
21. Do not over speed the engine or alter governor settings. Excessive speed is dangerous and shortens mower life.
22. It is advisable to wear suitable eye protection when operating a mower.
23. Turn the fuel off at the conclusion of mowing and reduce the throttle setting during engine run-out.
24. Store fuel in a cool place in a container specifically designed for the purpose.
25. Never pick up or carry a mower when it is operating.

# **SPECIFICATIONS**

## **SVG760 SCARIFIER – VERTICUTTER – GROOMER**

### **ENGINE**

9HP/10HP Petrol Driven

### **DRUMS**

2 independent smooth steel drums  
(free wheeling)

### **MASS**

140kg - 145kg  
(depending on the Reel used)

### **HEIGHT ADJUSTMENT**

Adjustable Front Roller as well as  
independent Reel adjustment

### **CUTTING WIDTH**

Approximately 760mm (30")

### **BODY**

5mm thick heavy duty steel frame

### **VERTICUT REEL**

26 Straight hardened and tempered  
Spring Steel blades for verticutting,  
spaced 25.4mm (1") apart

### **BLADE-TYPE SCARIFIER REEL**

26 Offset hardened and tempered  
Spring Steel blades for scarifying,  
spaced 25.4mm (1") apart

### **PIN-TYPE SCARIFIER REEL**

5 rows of specially hardened steel  
concrete nails spaced 115mm apart  
with approx. 38 nails per row

### **GROOMING REEL**

62 hardened and tempered Spring  
Steel blades spaced 10mm apart  
with 13 cutting tips per blade

**SPECIFICATIONS CORRECT AT TIME OF PRINTING, BUT ARE SUBJECT TO CHANGE  
WITHOUT PRIOR NOTICE**

# **SPECIFICATIONS**

## **SVG760 SCARIFIER – VERTICUTTER – GROOMER**

### **OPERATING INSTRUCTIONS**

Before starting engine, clutch lever should be in upward or release position. To start engine, follow procedure outlined in engine manufacture's instruction book. Maintain correct oil level in crankcase and when operating under dry, dusty conditions, service the air filter and change engine oil frequently. When ready to engage the machine, raise the front roller off ground slightly by bearing down on handle, increase the engine throttle and then lower the roller onto the turf.

### **TO ADJUST HEIGHT OF CUT**

Short trial runs at various height adjustments will help determine desired depth of cut. The front roller is adjustable on either side of the machine. It is recommended that the machine be placed on as level a surface as possible and the front roller be raised carefully while the reel is making contact with the level surface. Ensure that the gap between the level surface and the bottom edge of the front roller is consistent across the length, to ensure that the reel will cut evenly. For greater accuracy, should you be aware of the exact depth you would like to cut, then it is recommended to space the drums and front roller up by your desired cutting depth and to then adjust the front roller until the reel is making light contact with the level surface.

### **TO REMOVE REEL**

Remove the Chain Cover. Remove the chain from the Cutter Sprocket. Remove the sprocket itself (please note: the sprocket features a LH thread). You can then remove the bolts from the bearings of the reel and the reel should then be free to be removed from the machine.

### **TO REPLACE BLADES**

Once the Reel has been removed from the machine, remove the bearings as well as the collars and locknut from the shaft. The blades can now be slid off of the shaft. Reassemble with liberal amounts of grease to aid in future replacements.

### **TO ADJUST CHAIN**

The machine features a sprocket-type chain adjuster below the chain cover. To adjust the chain, simply loosen the bolt holding the adjuster in place and move the adjuster as needed before locking the bolt up again. A correctly adjusted chain should feature a small amount of slack while not being too tight to turn the reel freely by hand.

It is important to ensure that your chain is adjusted correctly at all times.

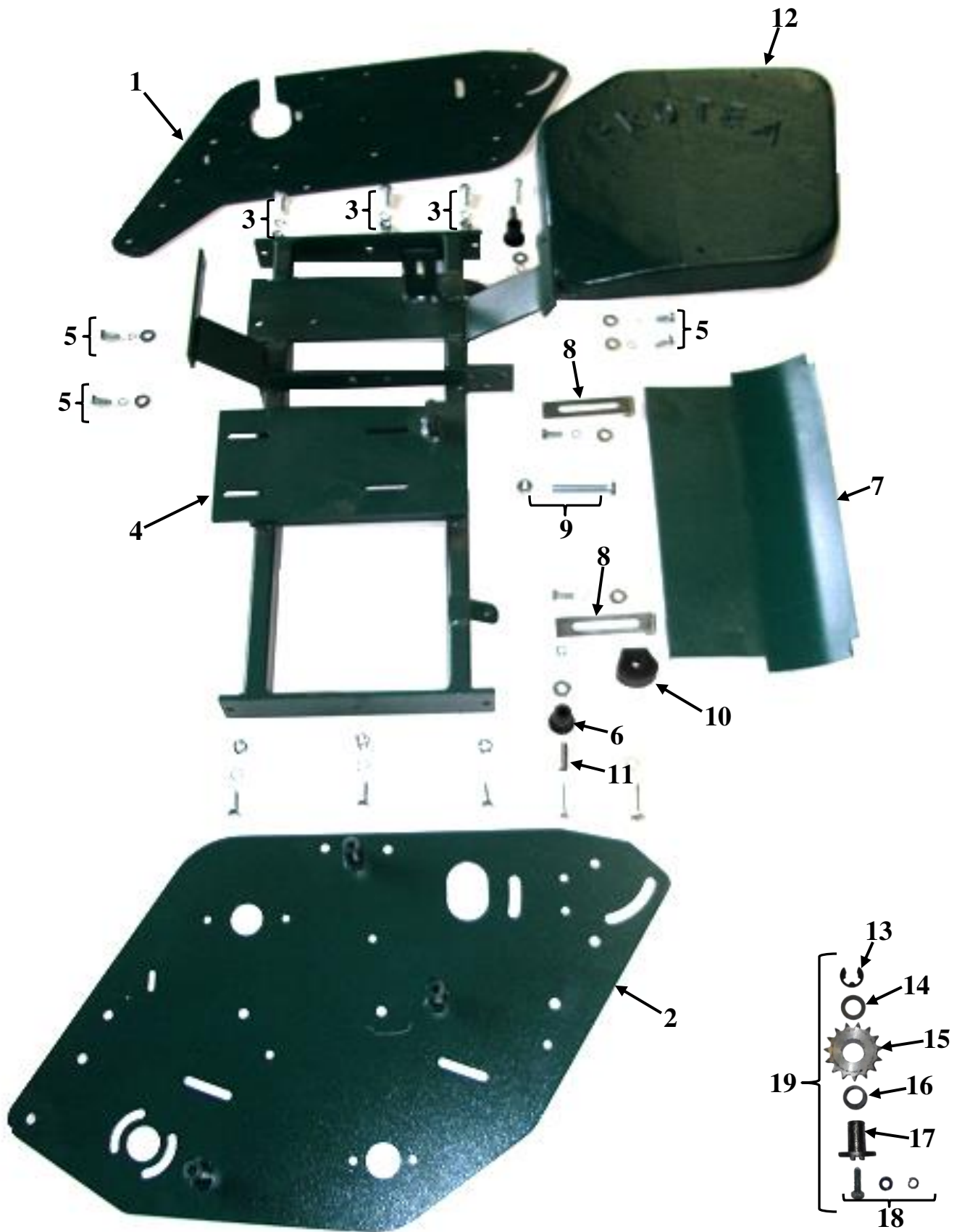
**SPECIFICATIONS CORRECT AT TIME OF PRINTING, BUT ARE SUBJECT TO CHANGE  
WITHOUT PRIOR NOTICE**



**REFER FIG. 1**

<b><u>ILLUS. NO</u></b>	<b><u>DESCRIPTION</u></b>	<b><u>PART NO</u></b>
1	SVG760 GROOMER REEL	467039
2	GROOMER BLADE	5306081
3	GROOMER REEL LOCKNUT	659880
4	GROOMER BLADE SPACER	5306082
5	SVG760 VERTICUT REEL	467038
6	VERTICUT BLADE	657240
7	SVG760 PIN-TYPE SCARIFIER REEL	467036
8	SCARIFIER BOLT	461957
9	SCARIFIER PIN	2441305
10	SVG760 BLADE-TYPE SCARIFIER REEL	467037
11	SCARIFIER BLADE	657241

**FIGURE 2**

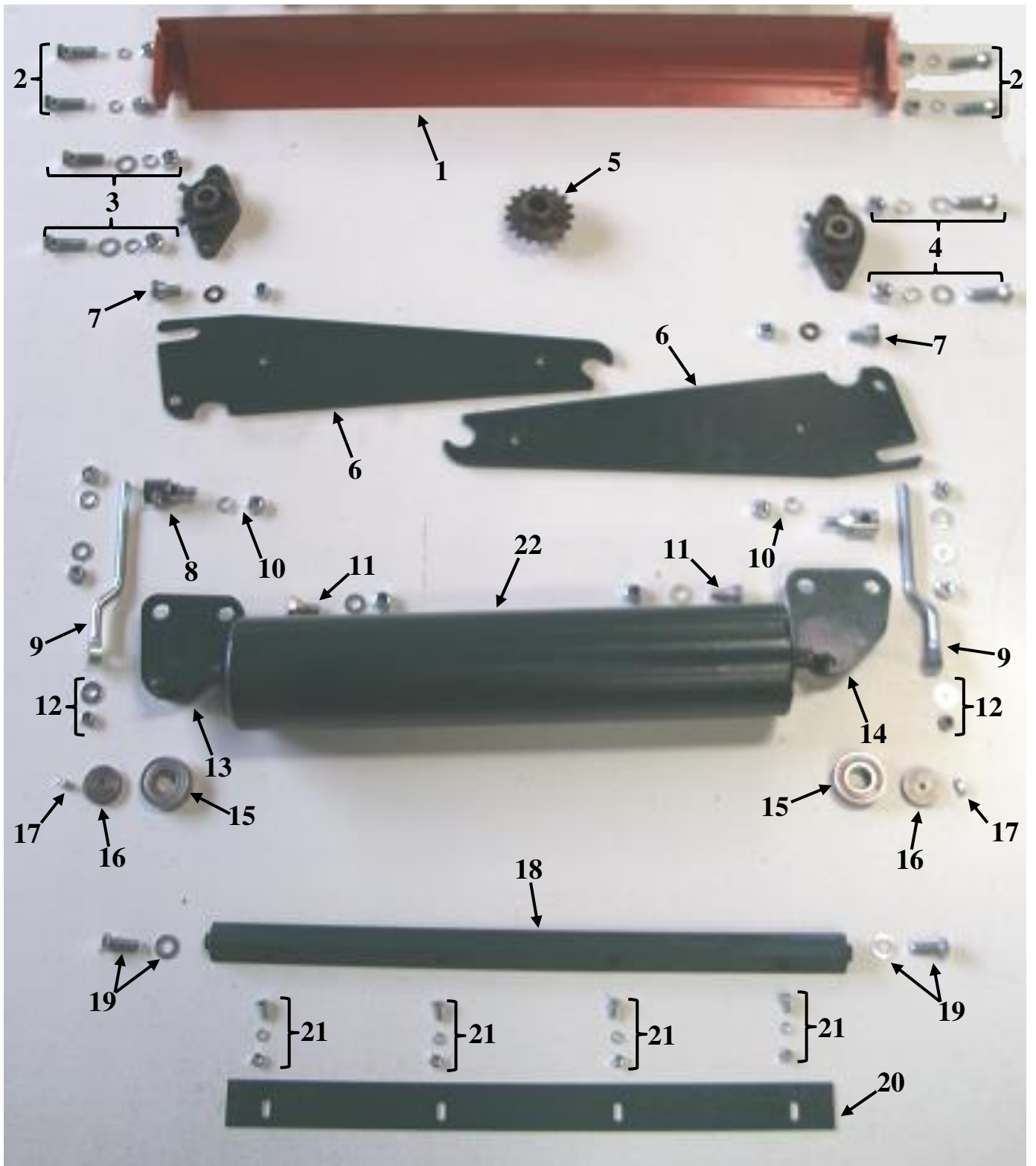




## REFER FIG. 2

<u>ILLUS. NO</u>	<u>DESCRIPTION</u>	<u>PART NO</u>
1	RH SIDE FRAME	467025
2	LH SIDE FRAME	467020
3	M10x25 SET SCREW + M10 SPRING WASHER + M10 NUT	STANDARD
4	SVG760 INNER FRAME	467063
5	M8x20 SET SCREW + M8 FLAT WASHER	STANDARD
6	GRASSBOX RUBBER SLEEVE	659225.1
7	SVG760 DEFLECTOR	659997
8	DEFLECTOR ADJUSTER	305656
9	M10x70 SET SCREW + M10 NUT	STANDARD
10	OLD TYPE CHAIN ADJUSTER	455769
11	GRASSBOX STEEL SLEEVE	659225.2
12	CHAIN COVER	656608
13	CHAIN ADJUSTER CIRCLIP	454723
14	CHAIN ADJUSTER WASHER	659555.2
15	NEW TYPE CHAIN ADJUSTER SPROCKET	659557.1
16	CHAIN ADJUSTER VESCONITE BUSH	659557.2
17	NEW TYPE CHAIN ADJUSTER PIN	659555
18	M8x20 SET SCREW + M8 FLAT WASHER + M8 SPRING WASHER	STANDARD
19	NEW TYPE SPROCKET CHAIN ADJUSTER COMPLETE ASSEMBLY	659560

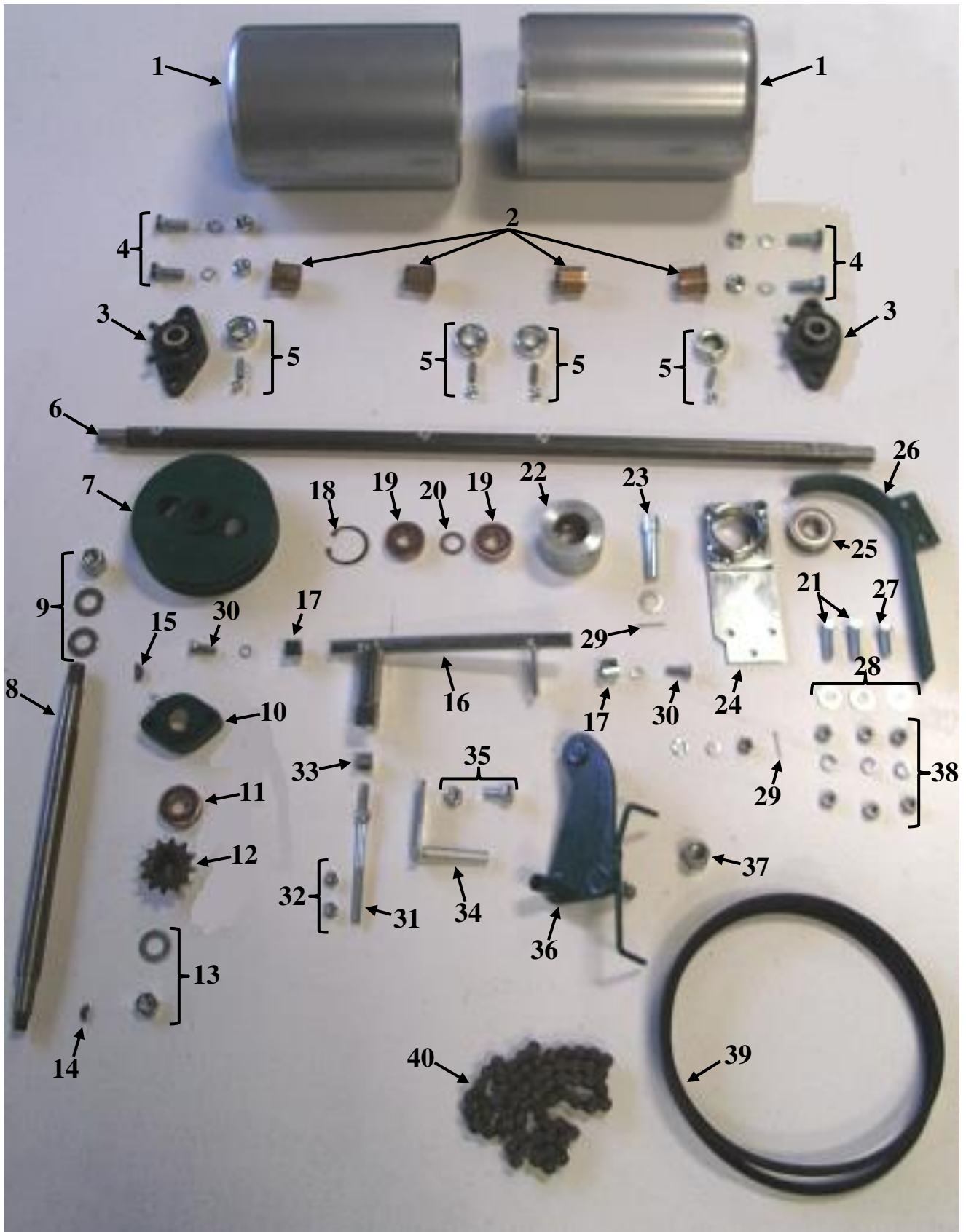
**FIGURE 3**



### REFER FIG. 3

<u>ILLUS. NO</u>	<u>DESCRIPTION</u>	<u>PART NO</u>
1	SVG760 SOLE PLATE	467055
2	M10x30 SET SCREW + M10 SPRING WASHER + M10 NUT	STANDARD
3	M12x40 SET SCREW + M12 SPRING WASHER + M12 NUT	STANDARD
4	SPROCKET SIDE: M12x40 FLAT HEAD SCREW + M12 SPRING WASHER + M12 NUT	STANDARD
5	CUTTER SPROCKET	467030
6	GRASSBOX ARM	659530
7	GRASSBOX ARM PIVOT BOLT	659525
8	PURCHASE BLOCK	201433
9	FRONT ROLLER ADJUSTER ROD	659113
10	M10 NUT + M10 SPRING WASHER	STANDARD
11	FRONT ROLLER PIVOT BOLT	163344
12	M8x20 FLAT WASHER + M8 NYLOC NUT	STANDARD
13	LH FRONT ROLLER BRACKET	654856
14	RH FRONT ROLLER BRACKET	654848
15	6203 BEARING	1122327
16	BEARING PULLER	652800
17	M6 GREASE NIPPLE	STANDARD
18	FRONT ROLLER SCRAPER BAR	651153
19	3/8" UNF x 3/4" SET SCREW + M10 FLAT WASHER	STANDARD
20	SCRAPER BLADE	651188
21	M6x12 SET SCREW + M6 SPRING WASHER + M6 NUT	STANDARD
22	FRONT ROLLER	653925

**FIGURE 4**



## REFER FIG. 4

<b>ILLUS. NO</b>	<b>DESCRIPTION</b>	<b>PART NO</b>
1	SVG760 DRUM	461150
2	FLANGED DRUM BUSH	3115997
3	DRUM BEARING	1129110
4	M12x40 SET SCREW +M12 SPRING WASHER + M12 NUT	STANDARD
5	DRUM SHAFT COLLAR + M8x20 GRUB SCREW + M8 NUT	201404
6	DRUM SHAFT	467000
7	CUTTER PULLEY	656237
8	DRIVE SHAFT	656157
9	5/8" UNF NYLOC NUT + M16 WASHER	STANDARD
10	DRIVE SHAFT BEARING HOUSING	656173
11	6203 BEARING	1122327
12	12T DRIVE SHAFT SPROCKET	656165
13	1/2" UNF NUT + M12 FLAT WASHER	STANDARD
14	WOODRUFF KEY NO.6	3802051
15	WOODRUFF KEY NO.9	3802267
16	PIVOT TUBE	656384
17	PIVOT BUSH	656430
18	35MM INTERNAL CIRCLIP	1502354
19	6202 BEARING	1122225
20	JOCKEY PULLEY SHIM WASHER	591787
21	3/8" UNF x 1 1/2" SET SCREW	STANDARD
22	JOCKEY PULLEY	656333
23	LIFTING PIN	656341
24	JOCKEY PEDESTAL	656190
25	6204 BEARING	1122422
26	BELT RETAINER	656245
27	3/8" UNF x 1" SET SCREW	STANDARD
28	M12 FLAT WASHER	STANDARD
29	M2x20 SPLIT PIN	STANDARD
30	M8x20 SET SCREW	STANDARD
31	JOCKEY PULLEY ADJUSTER ROD	656350
32	5/16" UNF NYLOC NUT	STANDARD
33	TRUNNION	656376
34	PIVOT TUBE STOP	656763
35	M10x35 SET SCREW + M10 SPRING WASHER + M10 NUT	STANDARD
36	JOCKEY PULLEY ARM	656270
37	1/2" UNF NYLOC NUT	STANDARD
38	3/8" UNF NUT + M10 SPRING WASHER	STANDARD
39	A28 "V" BELT	3601289
40	SVG760 CUTTER CHAIN (63R/61R)	2987750